



LA FEMM

STUDIO

072 054 5296

admin@lafemm.co.za

www.lafemmstudio.co.za

SKIN PHD SIGNATURE FACIAL TREATMENTS

Our aesthetic therapists will do a free 15-min personalized skin consultation with your first visit to prescribe the optimal journey for your skin. We will re-evaluate your journey regularly to ensure amazing results.

Hello SkinPhD Facial

A compact facial treatment for the client that is time restrained and needs quick, visible results.

R350 (30min)

Deep Cleanse & Detox Treatment

A treatment designed to detoxify and purify the skin.

R495 (60min)

Dermaplane Facial

This treatment refines the skin's texture by removing dead skin cells and all the fine vellus hairs on the surface of the skin, leaving you with a baby soft skin and an instant glow. The penetration of active ingredients is also enhanced

R550 (60min)

Age Focus

A treatment designed for ultimate relaxation with added benefit of replacing your skin functions for optimal skin health.

R550 (60min)

Retinol Surge

A treatment designed to instantly increase skin hydration levels and skin protective functions with a surge of antioxidants. Visibly improve skin plumpness, fine lines and wrinkles.

R650 (60min)

La Femm Signature Facial

A relaxing personalized facial for the client where the therapist analyzes the skin and according to the skin needs incorporates certain products on the clients skin

R750 (60min)

Elaine Brennan Micropeel

The GetGlowing micropeel is designed to refine skin texture, combats environmental damage, hyper-pigmentation, acne scarring and ageing skin. Series of three treatments, two weeks apart

R1650 (60-120min)

PRP (Platelet-rich Plasma)

Containing autologous white blood cells which is then needled into the skin area of concern

R1500 (60min)

PRP (Platelet- rich Plasma) including Bio-Glycolic Peel

*R1800 (75min)
An biomedical glycolic peel applied on the skin accompanied with an PRP treatment containing autologous white blood cells which is then needled into the skin area of concern*

R1800 (75min)

O'RI SIGNATURE FACIALS:

O'ri introduction Facial

R350 (30min)

O'ri deep cleanse facial

R495 (60min)

O'ri Customized facial

R650 (60min)

BIOMEDICAL TREATMENTS

Peel treatments:

Bio-Glycolic Peel

R495 (40min)

A phenomenal 25 % Glycolic Acid peel. Glycolic acid is an alpha hydroxy acid peel that upon application removes all dead skin cells from the epithelial layer, also known as corneocytes.

Bio-Strarum Peel

R900 (60min)

This peel contains Trichloro-acetic acid. It is a medium depth peel to address very deep lines and wrinkles as well as hyperpigmentation and melasma concerns.

Bio-SynthaC Peel

R650 (45min)

This peel contains high concentrations of ascorbic acid or vitamin C. This peel provides an immediate brightening effect on the skin and is very suitable.

Complexion Corrector Peel

R750 (45min)

The Complexion Peel is a cocktail peel suitable for individuals with pigmentation.

RX Salicylic Peel

R550 (45min)

The Salicylic acid peel is a Beta-Hydroxy Acid. This peel reduces elevated levels of sebum production and inflammation on the skin. Very suitable for acne-prone skin.

Glycolic Peel & Dermaplane

R750 (60min)

A phenomenal 25 % Glycolic Acid peel. Glycolic acid is an alpha hydroxy acid peel that upon application removes all dead skin cells from the epithelial layer, also known as corneocytes.

Melanin 10H Peel (include homecare kit)

R2500 (60min)

10h melanin depigmentation method is an intensive treatment with dual action. It both corrects and regulates hyperpigmentation achieving short and long term

Seborrheic Peel

R750 (45min)

This chemical peel contains comedolytic properties to address acne scarring, active acne and microbial growth. The ideal solution to active an acute acne.

Bio-Thermo-Dynamic Facial

R600 (45min)

Also known as the "fire and ice" treatment to stimulate blood flow and enhance a radiant appearance. Suitable for any skin type and any season of the year.

Bio-Preggy Peel

R495 (40min)

Preggy peel is concentrated ingredients at a low percentage of ingredients as it is safe for a pregnant female to do during pregnancy and breastfeeding. This can be done on the face and stomach.



MICRONEEDLING TREATMENTS:

Focused Needling (Face Only)

R895 (60min)

(Add neck area for an additional R200)

0.5mm -0.75 mm microneedling depth procedures are available depending on the skin concern established during the skin analysis and consultation. The various procedures are formulated to address; Ageing, Acne, Sensitive skin, Pigmentation, Stretch marks, Keloid and hypertrophic scars.

Bio-Glycolic Peel & Needle(Face Only)

R1250 (60min)

(Add neck area for an additional R200)

A phenomenal 25 % Glycolic Acid peel. Glycolic acid is an alpha hydroxy acid peel that upon application removes all dead skin cells from the epithelial layer, also known as corneocytes. 0.75 mm microneedling depth procedures are available depending on the skin concern established during the skin analysis and consultation. The various procedures are formulated to address; Ageing, Acne, Sensitive skin, Pigmentations, Stretch marks, Keloid and hypertrophic scars.

CBD Microneedling(Face Only)

R1350 (60min)

(Add neck area for an additional R200)

1 mm depth microneedling with Cannabis. This is a suitable treatment for individuals with atopic dermatitis and inflammation on the skin. Also suitable for anti-ageing purposes, inflammation.

Gold Standard Microneedling (GSM Treatment,Face Only)

R1350 (60min)

(Add neck area for an additional R200)

0.5mm - 1 mm depth microneedling with high concentration retinol. For individuals concerned about acne scars, ice pick scars, keloid scars and very deep lines and wrinkles and stubborn pigmentation.

Fibroblast Growth Serum Microneedling

R1350(60min)

(Add neck area for an additional R200)

The Fibroblast Growth serum with active anti inflammatory markers stimulates Collagen fibre synthesis. This is go-to anti-ageing treatment for fine lines and wrinkles.

Royal Standard Microneedling (Face Only)

R1550 (60min)

(Add neck area for an additional R200)

0.5mm - 1 mm depth microneedling including the Bio- Glycolic peel, with a combination of 2x RX serums or RX chemical peels – customized for your specific skin concern. Weather individuals are concerned about acne scars, ice pick scars, pigmentation, uneven skintones and very deep lines and wrinkles. This combination treatment is ideal to specifically address your skin concern, and can be altered every month to optimize results

Microneedling Scalp Treatment

R1250 (60 min)

This treatment is for individuals who struggle with hair loss (Alopecia) and hair thinning due to static hair follicles and inflammation on the scalp. Mild scalp microneedling is performed on the scalp with biological ingredients to stimulate the follicle hair growth again.

Scar and wound care treatment with microneedling from R750

1 mm needling with growth factors on old hypertrophic or keloid scars. These scars include burn wounds, surgical scars, ulcers, and pressure wounds. Other scars include;

Abdominoplasty, Mastopexy, Mastectomy, Breast augmentation, Diabetic ulcers, Skin grafts, Oncology scars, Suture scars, Maceration & abrasion scars

BODY MASSAGE:

Indian Head Massage	R250 (30 min)
Back, Neck & Shoulder	R295 (30 min)
Full Body Massage	R430 (60 min)
Deep Tissue Sports Massage Half Body	R320 (30 min)
Deep Tissue Sports Massage 3/4 Body	R430(30 min)
Deep Cleanse & Detox Back Treatment	R495 (60 min)
Foot Massage	R200 (20 min)
Reflex	R220 (20 min)
Reflex	R350 (40min)
Lymph Drainage Half Body	R320 (30 min)
Lymph Drainage Full Body	R450 (60 min)
Add on Hot Stone/Soy Candle	R80

Ladies:

WAXING:

Mens:

Lip	R70	Brows	R70
Brows	R70	Ears	R70
Chin	R80	Nose	R70
Nose	R70	Chest	R210
Full Face (including brows)	R250	Full Back	R260
Bikini	R150	1/2 Back	R220
Brazilian/G-Sring	R230	Full Arms	R220
Hollywood (complete removal of intimate hair)	R280	1/2 Leg	R220
Full Leg	R240	3/4 Leg	R240
3/4 Leg	R200	Full Leg	R260
1/2 Leg	R180		
Under Arm	R100		
Full Arm	R150		
1/2 Arm	R110		
Foot Wax	R60		



TINTING:

<i>Eyebrow Tint</i>	R70
<i>Eyelash Tint</i>	R80
<i>Henna Brows</i>	R250

EYELASH EXTENSIONS:

<i>Classic Lashes (Full Set)</i>	R480
<i>Volume Lashes (Full set)</i>	R550
<i>Classic Lash Fill 2-3 weeks</i>	R300
<i>Volume Lashes Fill 2- 3 weeks</i>	R350
<i>Classic Lash Fill 3-4 weeks</i>	R400
<i>Volume Lashes Fill 3- 4 weeks</i>	R450
<i>Lash Removal</i>	R100

NAILS:

Overlay:

<i>Acrylic- colour/natural</i>	R340
<i>Acrylic- French/faded French</i>	R390
<i>Acrylic plus gel polish</i>	R400
<i>Gel polish overlay</i>	R260
<i>Rubber overlay</i>	R300
<i>Rubber overlay + gel polish</i>	R350

Tips:

<i>Natural tip- with acrylic overlay</i>	R360
<i>Natural tip- with french overlay</i>	R395
<i>Natural tip- with acrylic & gel polish</i>	R390
<i>French tip with acrylic overlay</i>	R360
<i>French/colour tip- with rubber overlay</i>	R350

Designer Tips & Nail Art:

<i>Sculpted nails</i>	R450
<i>Nail Glitter (per nail)</i>	R5
<i>Nails with stones(per nail)</i>	R20
<i>Nail art with stickers (per nail)</i>	R10
<i>3D nail art (per nail)</i>	R30

Fills:

<i>Acrylic colour</i>	R290
<i>Acrylic + Gel polish</i>	R330
<i>Rubber fill</i>	R260
<i>Rubber fill with gel</i>	R290
<i>Gel fill</i>	R230



Toes:

<i>Gel polish overlay</i>	R260
<i>French</i>	R270
<i>Acrylic overlay</i>	R280

HANDS & FEET:

Manicures:

<i>Manicure- with nail polish</i>	R220
<i>Mini Mani- File, Buff & nail polish</i>	R130
<i>Mens manicure</i>	R170
<i>Mens pedicure</i>	R220

Pedicures:

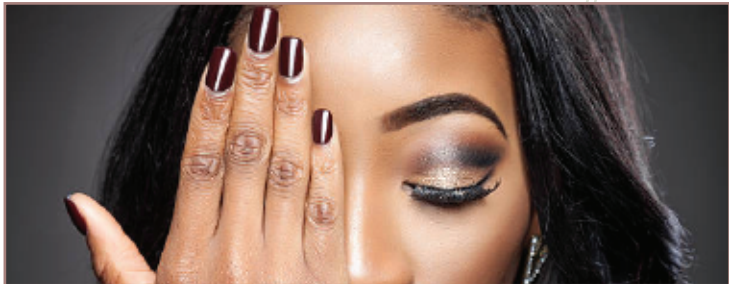
<i>Express Pedi</i>	R160
<i>Pedicure with nail polish</i>	R260
<i>Pedicure without nail polish</i>	R230
<i>Pedicure with gel polish</i>	R360
<i>Pedicure with acrylic overlay</i>	R400
<i>Deluxe pedicure(foot peeling & gel polish)</i>	R430
<i>Medi Heel Pedi (no nail polish)</i>	R330
<i>Medi Heel with nail polish</i>	R360

Removals & Repairs:

<i>Acrylic Soak</i>	R80
<i>Rubber/Gel Soak off</i>	R60
<i>Nail repair per nail</i>	R50
<i>Soak, file, buff & polish</i>	R170
<i>Buff & glaze</i>	R130

Add on:

<i>Gel polish</i>	R220
<i>Hot/ Cold Parrafin</i>	R80
<i>Hand scrub</i>	R70



MAKE-UP:

<i>Day make-up</i>	R350
<i>Formal (Matric dance)</i>	R450
<i>Bridal make-up (including lashes)</i>	R650
<i>Bridal make-up (including lashes & MUD lipstick)</i>	R950
<i>Trail make-up</i>	R350
<i>Add on lashes</i>	R100
<i>Make-up lesson workshop</i>	R380 (60 min)

PERMANENT MAKE-UP:

Eyebrows:

<i>Microbladed brows</i>	R1350
<i>Pixel Brows</i>	R1450

Eyeliner:

<i>Lash enhancement eyeliner</i>	R1250
<i>Thick eyeliner</i>	R1350
<i>Top only</i>	R850

Lips:

<i>Full lip colouring</i>	R2500
---------------------------	-------

Touch up:

<i>Eyebrows within 6 months</i>	R1100
<i>Eyeliner within 6 months</i>	R950
<i>Eyebrows after 12 months</i>	R1250
<i>Eyeliner after 12 months</i>	R1150
<i>Full lip</i>	R1800
<i>Liner top only</i>	R750



Elaine
Brennan 
SKIN RENEWAL PEELING SYSTEM
Peel Away That Problem Skin

skinPhD 
BEYOND BEAUTY & SKIN

BioMedical
EMPORIUM


O'ri 
Science in Skincare



YOUR NEXT APPOINTMENT

BANK DETAILS

LA FEMM STUDIO

Standard Bank

Account Number: 10 15 404 433 2

Branch Name: Groblersdal

Current Account

